

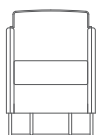


## Tommo

Design by Mark Gabbertas

Understated, contemporary and inviting, Tommo by Mark Gabbertas is a versatile range of low lounge pieces. The collection includes a club chair, dining chair and stool and features slender upholstery with a twin stitch detail and simple skid base.

A stunning new quilted finish is now available.



A530



A530Q



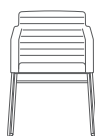
A531



A531Q



A532



A532Q



A534



A534Q



## Design

Mark Gabbertas

Gabbertas' philosophy is to create character through simplicity, giving a lasting design aesthetic, earning him numerous awards including a Red Dot and a Design Guild Mark for the design of Haven for Allermuir.

Standard Features

(\* - Selected models only)  
Traditional carcass construction  
Fully upholstered\*  
Soft quilted upholstery\*  
Tubular steel frame  
Plastic glides

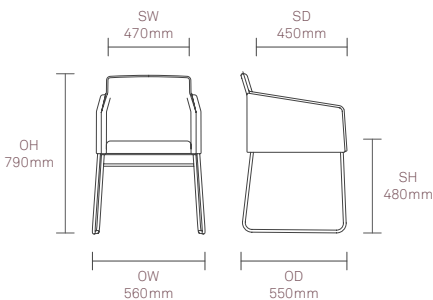
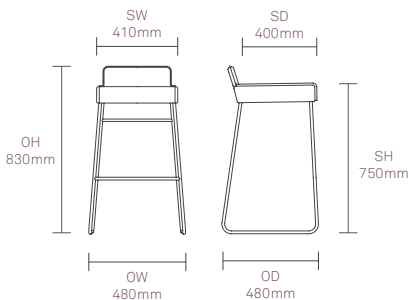
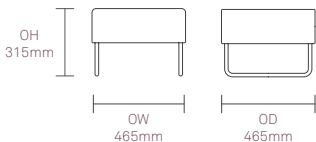
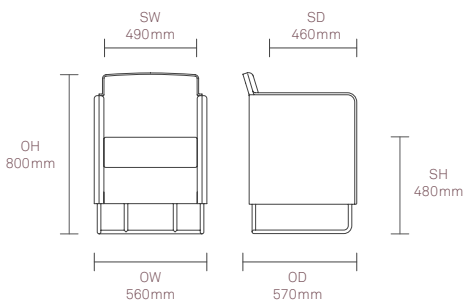
Optional Features

Counter height Stool option\*  
Two-tone upholstery

Performance Standards

EN 13761:2002

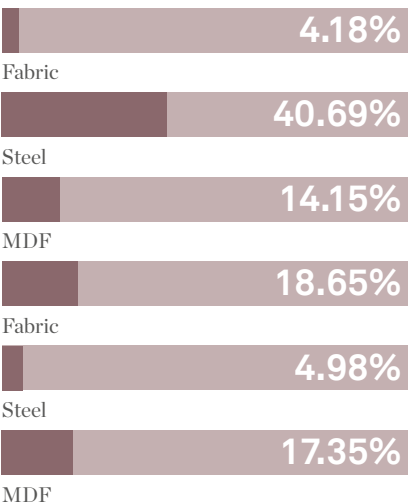
Dimensions



Environmental Performance

Material Content

Components are constructed of the following



Recycled Content

Contains up to 28.8% of Recycled Material



Recyclability

The range is 100% recyclable

100%

---

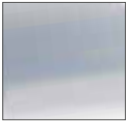
## Finish Options

Tubular steel frame available in  
Polished Chrome

Tommo can be upholstered in a broad range of  
contract upholstery fabrics, vinyls and leathers  
from Allermuir standard collection.

---

### Standard Metal Finishes



Polished  
Chrome