

Mercury XL

Mercury XL task chairs are built with contoured seats and backrests to provide high levels of comfort and support during prolonged seated periods. Mercury XL is easy to adjust and includes a one touch back height adjustment and options including backrest heights, tilt actions and arm options.



Standard Features

(* Selected models only)

- 5 Star base*
- 50mm Hard wheel castors*
- Height adjustable ratchet back*
- Independent mechanism with seat and back locking function*
- Standard mechanism with back locking function*
- High back*
- Fixed arms*
- Height adjustable arms*

Optional Features

- Castors for hard and soft floor coverings*
- 50mm seat depth adjustment*
- Two-tone upholstery
- Choice of finish options available – see finish pages

Performance Standards

This product has been designed to conform to the following standards and has been tested for type approval.

- BS EN1335 –1:2000
- BS EN1335 – 2 /3 :2009
- BS5459 - 2:2000+A8:2008

Dimensions

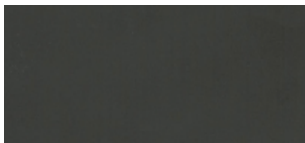
OH-Overall Height OD-Overall Depth OW-Overall Width AH-Arm Height BH-Back Height SH-Seat Height SW-Seat Width SD-Seat Depth



Finish Options

- 5 Star base available in Black Plastic or Polished Aluminium
- Tubular Steel cantilever frame in Black powder coat or Polished Chrome
- Plastic components are available in Black
- Mercury can be upholstered in a broad range of contract upholstery fabrics and vinyls from The Senator Group standard upholstery collection

Component Finishes



Black (Plastic)

Base Finishes

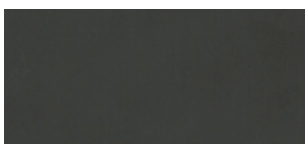


Black (Plastic)



Polished Aluminium

Frame Finishes



Black (Powder Coat)

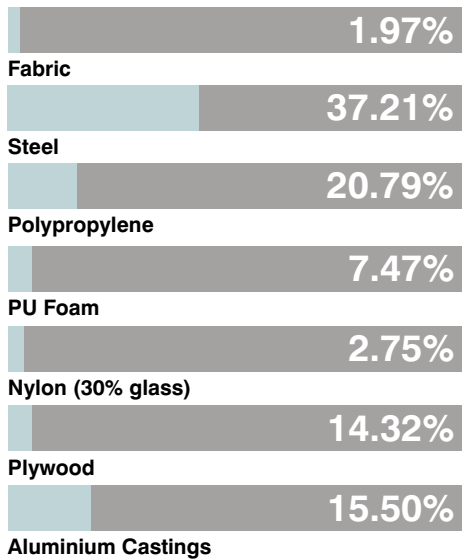


Polished Chrome

Environmental

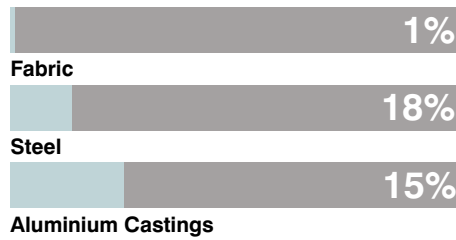
Material Content

Components are constructed of the following



Recycled Content

Contains up to 34.50% of Recycled Material



Recyclability

The range is 100% recyclable

99%

Environmental information for this range has been based on M60L.
For more detail please refer to individual EPA sheets.

The Senator Group 3 R's

The Senator Group is committed to continually improving the sustainability of all environmental aspects within our business.

To meet both international standards and our own environmental targets we apply the three R's principle

-Reduce, Reuse and Recycle.

Whilst recycling is the element which receives the most exposure it is actually the last option available and should never be the prime target in anyone's battle to reduce waste.

It is our duty as individuals and as a company to initially attempt to **Reduce** usage. Then we should look to **Reuse** wherever possible and finally, only after these two processes have been exhausted, should we consider **Recycling**.

–Reduce
–Reuse
–Recycle