

Mercury Mesh

The addition of a stylish, height adjustable mesh back to our successful Mercury family gives a modern, fresh aesthetic to the range. The upholstered seat task chair offers a wide range of choice with two variations of mechanism and a choice of arm options.

Mercury Mesh is available as a task chair and cantilever visitor chair, both with a choice of arms and mechanisms.



Standard Features

(* Selected models only)

- 5 Star base*
- Tubular Steel cantilever frame*
- 50mm Hard wheel castors*
- Height adjustable back
- Plastic glides*
- Independent mechanism with seat and back locking function*
- Standard mechanism with back locking function*
- 3D self-supporting mesh back
- Fixed arms*
- Height adjustable arms*

Optional Features

- Castors for hard and soft floor coverings*
- 50mm seat depth adjustment*
- Choice of finish options available – see finish page

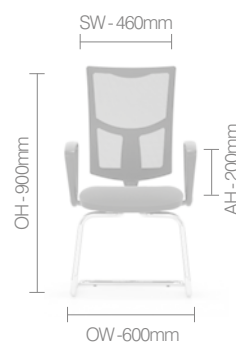
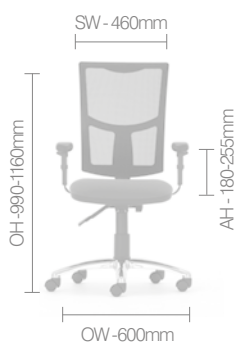
Performance Standards

This product has been designed to conform to the following standards and has been tested for type approval.

- BS EN1335 –1:2000
- BS EN1335 – 2 /3 :2009
- BS5459 - 2:2000+A8:2008

Dimensions

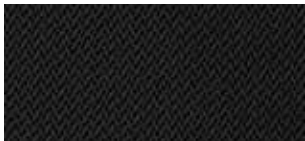
OH-Overall Height OD-Overall Depth OW-Overall Width AH-Arm Height BH-Back Height SH-Seat Height SW-Seat Width SD-Seat Depth



Finish Options

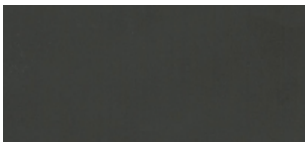
- 5 Star base available in Black Plastic or Polished Aluminium
- Plastic components are available in Black
- Mesh back available in Black
- Mercury Mesh can be upholstered in a broad range of contract upholstery fabrics and vinyls from The Senator Group standard upholstery collection

Mesh Colours



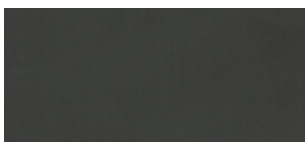
Black

Component Finishes



Black (Plastic)

Base Finishes



Black (Plastic)

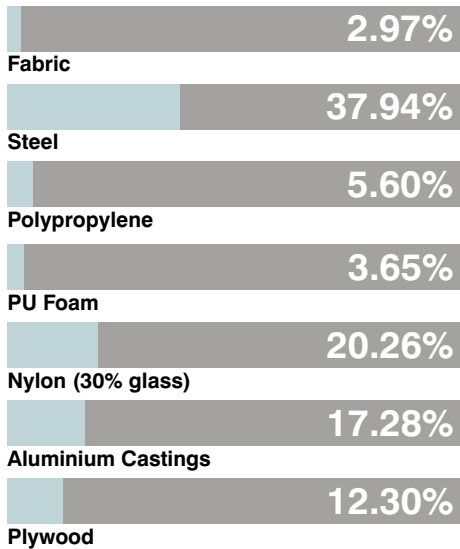


Polished Aluminium

Environmental

Material Content

Components are constructed of the following



Recycled Content

Contains up to 37.5% of Recycled Material



Recyclability

The range is 99% recyclable

99%

Environmental information for this range has been based on M100.
For more detail please refer to individual EPA sheets.

The Senator Group 3 R's

The Senator Group is committed to continually improving the sustainability of all environmental aspects within our business.

To meet both international standards and our own environmental targets we apply the three R's principle

-Reduce, Reuse and Recycle.

Whilst recycling is the element which receives the most exposure it is actually the last option available and should never be the prime target in anyone's battle to reduce waste.

It is our duty as individuals and as a company to initially attempt to **Reduce** usage. Then we should look to **Reuse** wherever possible and finally, only after these two processes have been exhausted, should we consider **Recycling**.

–Reduce
–Reuse
–Recycle