

Freeflex

Freeflex task chair intuitively encourages movement by emulating the body's natural flexibility, providing all-round support throughout a working day. Flexibility is central to its design, with a dynamic weight balancing tilting action, articulated flexing back and the freedom to make simple adjustments; to seat height, seat depth and back height, creates a chair which not only

looks stylish, but pushes ergonomic boundaries.

Available in an array of colour choices, with new combinations of dark grey and black components or light grey and dark grey, to create inspirational spaces within workplaces.



Design by Justus Kolberg

Standard Features (*Selected models only)

- Injection moulded 5 star plastic base
- 60mm Hard wheel castors*
- Gas lift - 150kg*
- Stool height gas lift, adjustable footring and glides*
- Weight controlled synchronised mechanism with travel limitation in four steps, including locking upright*
- Limited recline function*
- 60mm seat depth adjustment
- 70mm back height adjustment
- Integrated flexible back membrane

Width and Height adjustable arms*

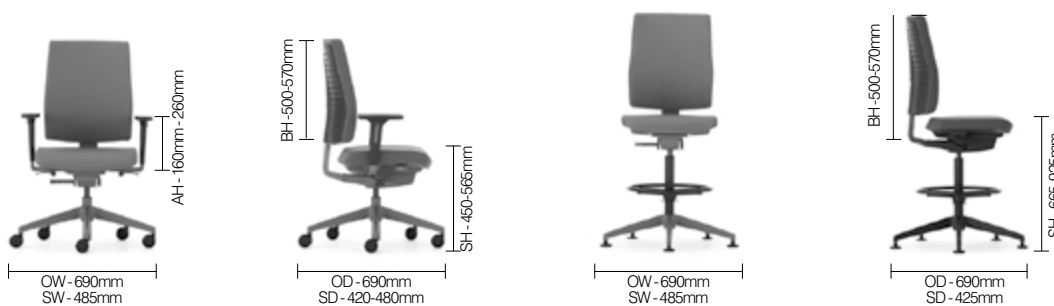
- Moulded seat and back foam
- Contrasting mesh side panels on the seat and back, with a complementary coloured back insert
- Integrated user instructions

Optional Features

- Height and width adjustable arms with multifunction arm pad*
- Two-tone upholstery
- Castors for hard and soft floor coverings
- Gas lift options

Performance Standards

DIMENSIONS



DESIGN Justus Kolberg

Justus Kolberg has been running his own design studio in Hamburg since 1997 after completing his studies in industrial design at the Muthesius Academy of Fine Arts and Design in Kiel in 1990.

Justus has received numerous honours including the IF Hannover Product Design Award, the Red Dot des Design Centrum NRW, the IDEA-Gold Industrial Design Excellence Award and the Japanese Good design Award.

Freeflex

Freeflex task chair intuitively encourages movement by emulating the body's natural flexibility, providing all-round support throughout a working day. Flexibility is central to its design, with a dynamic weight balancing tilting action, articulated flexing back and the freedom to make simple adjustments; to seat height, seat depth and back height, creates a chair which not only

looks stylish, but pushes ergonomic boundaries.

Available in an array of colour choices, with new combinations of dark grey and black components or light grey and dark grey, to create inspirational spaces within workplaces.



Design by Justus Kolberg

ENVIRONMENTAL

Material Content

Components are constructed of the following



Recycled Content

Contains up to 8% of Recycled Material



Recyclability

The range is 100% recyclable

100%

SENATOR 3 R'S

Senator is committed to continually improving the sustainability of all environmental aspects within our business.

To meet both international standards and our own environmental targets we apply the three R's principle

-Reduce, Reuse and Recycle.

Whilst recycling is the element which receives the most exposure it is actually

the last option available and should never be the prime target in anyone's battle to reduce waste.

It is our duty as individuals and as a company to initially attempt to **Reduce** usage. Then we should look to **Reuse** wherever possible and finally, only after these two processes have been exhausted, should we consider **Recycling**.

-Reduce
-Reuse
-Recycle

Freeflex

FINISH OPTIONS

Five star base available in either Dark Grey plastic or Polished Aluminium

Gas lift available in Dark Grey

Plastic components in Dark Grey with Black or Light Grey back and arms

Contrasting mesh side panels and back inserts available in either Fog, Carbon, Storm, Sunset, Aqua and Avacado

Freeflex can be upholstered in a broad range of contract upholstery fabrics, vinyls and leathers from The Senator Group standard upholstery collection

BREATHABLE MESH SIDE PANELS



Fog



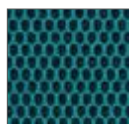
Carbon



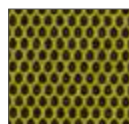
Storm



Sunset



Aqua



Avacado

BACK INSERT COLOURS



Fog



Carbon



Storm



Sunset



Aqua

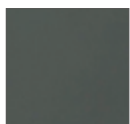


Avacado



Silver

COMPONENTS



Dark Grey

ARM/ BACK COLOURS

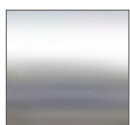


Black



Light Grey

BASE



Chrome