

# Mercury

Mercury operator chairs feature a contoured seat and backrest. Their comprehensive suite of functional controls and options provide comfort and support during prolonged periods of seated work.

The fully upholstered task seating range is available with a choice of backrest heights, tilt actions, arm options and two variations of mechanism. Mercury can be tailored to meet your exact requirements.



## Standard Features

(\* Selected models only)

- 5 Star base\*
- Tubular Steel cantilever frame\*
- 50mm Hard wheel castors\*
- Plastic glides\*
- Height adjustable back\*
- Independent mechanism with seat and back locking function\*
- Standard mechanism with back locking function\*
- Medium back\*
- High back\*
- Fixed arms\*
- Height adjustable arms\*
- Stool height variation\*

## Optional Features

- Castors for hard and soft floor coverings\*
- 50mm seat depth adjustment\*
- Two-tone upholstery
- Choice of finish options available – see finish pages

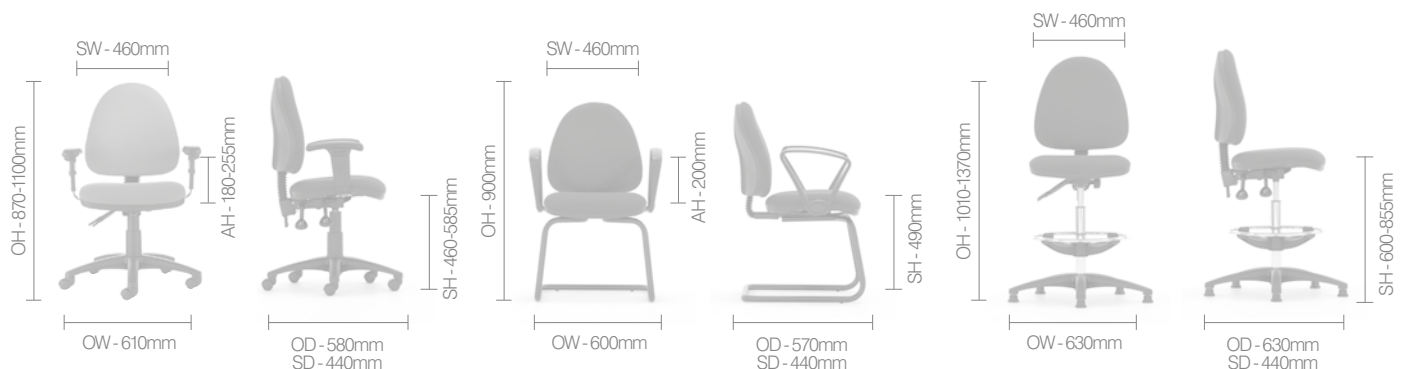
## Performance Standards

This product has been designed to conform to the following standards and has been tested for type approval.

- BS EN1335 –1:2000
- BS EN1335 – 2 /3 :2009
- BS5459 - 2:2000+A8:2008

## Dimensions

OH-Overall Height OD-Overall Depth OW-Overall Width AH-Arm Height BH-Back Height SH-Seat Height SW-Seat Width SD-Seat Depth

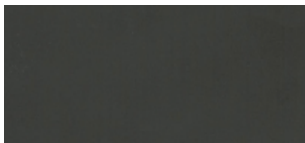


### Finish Options

- 5 Star base available in Black Plastic or Polished Aluminium
- Tubular Steel cantilever frame in Black powder coat or Polished Chrome
- Plastic components are available in Black
- Mercury can be upholstered in a broad range of contract upholstery fabrics and vinyls from The Senator Group standard upholstery collection

---

### Component Finishes



Black (Plastic)

### Base Finishes

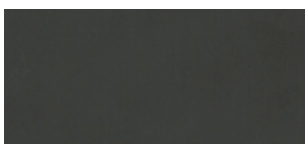


Black (Plastic)



Polished Aluminium

### Frame Finishes



Black (Powder Coat)



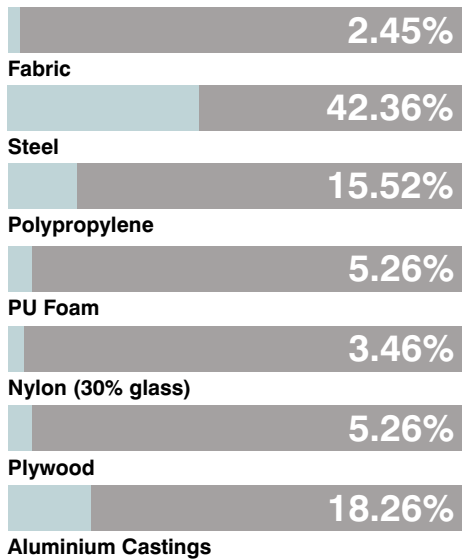
Polished Chrome

---

## Environmental

### Material Content

Components are constructed of the following



### Recycled Content

Contains up to 40% of Recycled Material



### Recyclability

The range is 100% recyclable

**99%**

Environmental information for this range has been based on M20.  
For more detail please refer to individual EPA sheets.

## The Senator Group 3 R's

The Senator Group is committed to continually improving the sustainability of all environmental aspects within our business.

To meet both international standards and our own environmental targets we apply the three R's principle

-Reduce, Reuse and Recycle.

Whilst recycling is the element which receives the most exposure it is actually the last option available and should never be the prime target in anyone's battle to reduce waste.

It is our duty as individuals and as a company to initially attempt to **Reduce** usage. Then we should look to **Reuse** wherever possible and finally, only after these two processes have been exhausted, should we consider **Recycling**.

**–Reduce**  
**–Reuse**  
**–Recycle**