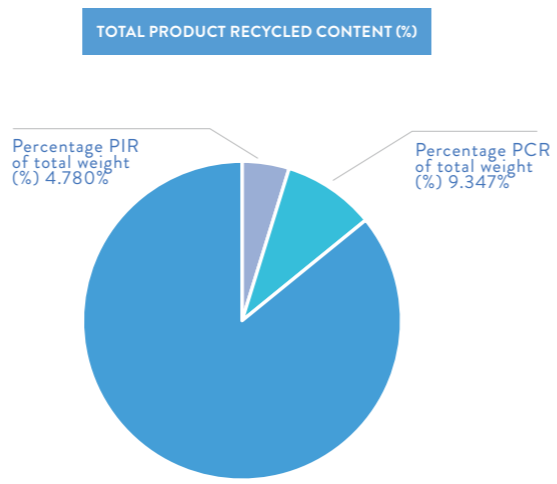
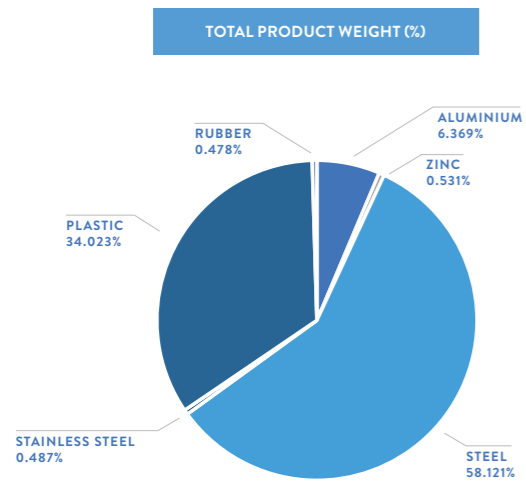


ENVIRONMENTAL

MATERIAL MAKE-UP			TOTAL RECYCLED CONTENT		BREAKDOWN OF RECYCLED CONTENT		TOTAL RECYCLABLE	
Overall Product			Overall Product		Overall Product		Overall Product	
Material type	Total Material type weight (g)	Percentage of Total Product Weight (%)	Material-Type Recycled Content (%)	Percentage PIR of total weight (%)	Percentage PCR of total weight (%)	Total Product Recyclable (g)	Total Product Recyclable (%)	
Aluminium	120	6.37%	6.051%	3.207%	2.844%	120	6.369%	
Zinc	10	0.53%	0.234%	0.117%	0.117%	10	0.531%	
Steel	1095	58.12%	7.555%	1.284%	6.271%	1095	58.121%	
Stainless Steel	9	0.48%	0.287%	0.172%	0.115%	9	0.478%	
Plastic	641	34.02%	0%	0%	0%	641	34.023%	
Rubber	9	0.48%	0%	0%	0%	9	0.478%	
Total	1884	100%	14.127%	4.780%	9.347%	1884	100%	



COMPLIANCE & SAFETY CERTIFICATION

Whilst no mandatory standards apply to the monitor arm product sector, all Colebrook Bosson Saunders monitor arms have been designed with appropriate articulation features, dimensional range and adjustability to conform to the requirements of BS EN ISO 9241:5 1999 Ergonomic requirements for office work with visual display terminals (VDTs).

While every effort is made to ensure the accuracy of our technical information, Colebrook Bosson Saunders (Products) Ltd accept no liability for the accuracy of the information contained in this document and reserve the right to modify the specifications or data contained herein without prior notification.

Doc Rev 1, Product Rev #A / 02.04.2019

CLEANING, STORAGE & MAINTENANCE

- | | |
|------------------------|---|
| Routine servicing | Periodic inspection |
| Service components | Available to order |
| Cleaning & Maintenance | Damp cloth, no abrasives, no solvents to be used on the cosmetic surfaces |
| Handling & Storage | Do not drop or expose to moisture |

bhc furniture
plan - manage - install



lima

Lima Arm incl. Post Clamp
LMA/001/001

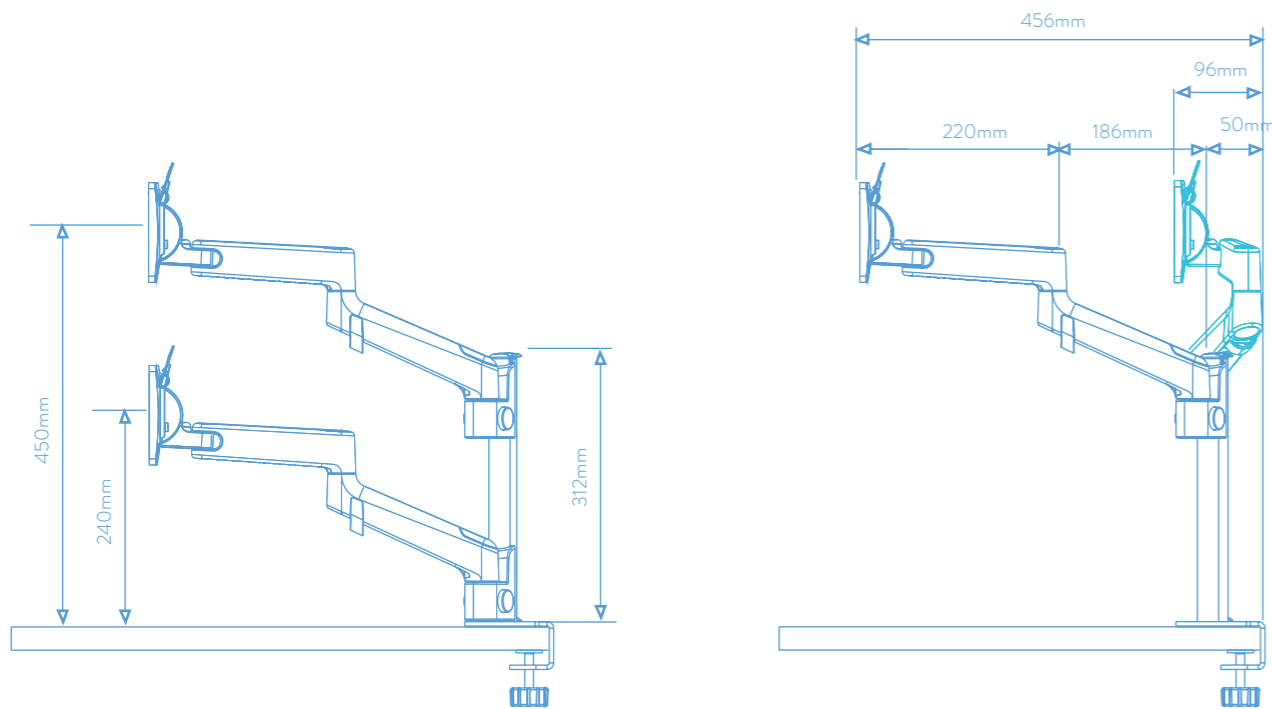
bhc furniture
plan - manage - install

KEY FEATURES

- Supports up to 6.5kg in monitor weight
- All in one box solution for a single screen set up
- Additional arm available separately for dual screen (LMA/001/002)
- Articulation range and smoothness of motion
- Integral post clamp (clamp range 6 to 40mm)
- Height adjustability achieved using push button technology
- Fast and easy installation
- 3-point cable management guides cables tidily from monitor to desktop
- Material selection and 'design-for-disassembly' make Lima 100% recyclable at the end of its operational life.
- Available in Black, White and Grey

Maximum Load Range:	6.5kg (14lbs)
Maximum Height:	450mm
Maximum Reach:	456mm
Vertical Range:	210mm
Tilt Range:	+80° / -10°
Recycled content:	14%
Total product recyclable:	100%

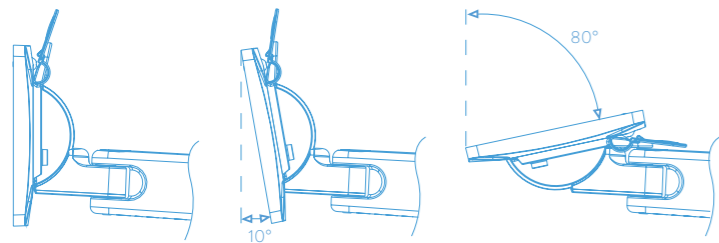
ARM AND POST DIMENSIONS



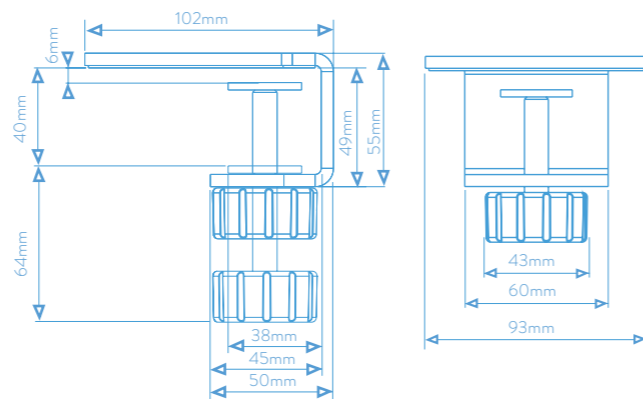
VERTICAL REACH	
Max	450mm
Min	240mm

HORIZONTAL REACH	
Max	456mm
Min	96mm

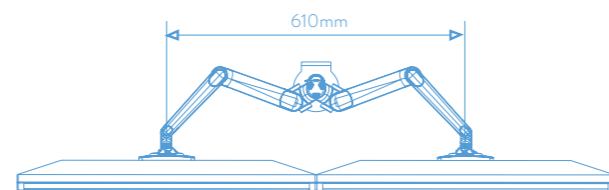
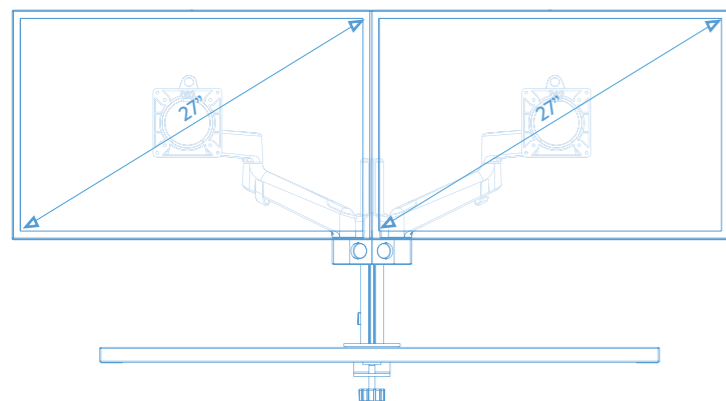
VESA TILT RANGE



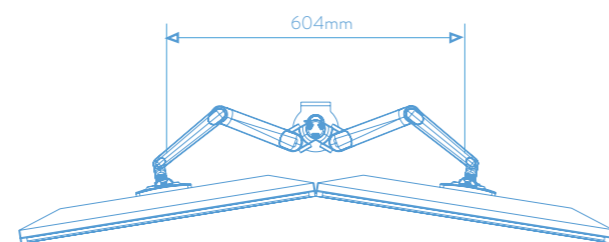
CLAMP DIMENSIONS



MAX SCREEN SIZE DUAL - 27"



FLAT



COCKPIT

ORDERING INFORMATION

Product Description: Lima Arm incl. Post Clamp
 Product code: LMA/001/001
 Colour: /G: Grey or /W: White or /B: Black

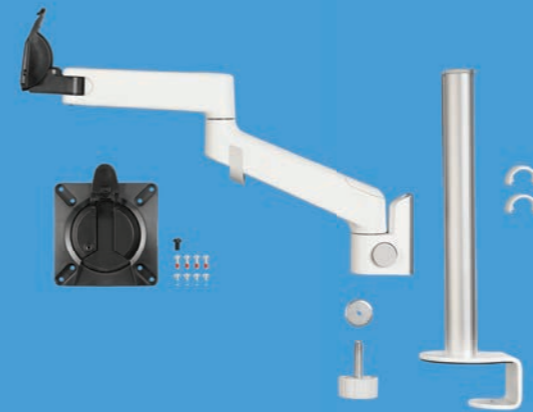
WARRANTY

Warranty Term: Limited lifetime

LOGISTICAL

BOX CONTAINS

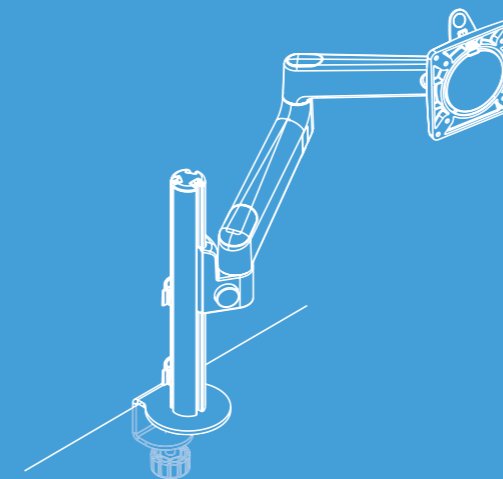
Lima arm, all in one post with clamp, VESA mount plate & VESA fixing screws, work top pad, cable management clips.



Product net weight:	1.9kg
Box dims (HxWxD):	535mm x 172mm x 126mm*
Box gross weight	2.5kg
Master carton quantity	4
Master carton dims (HxWxD):	560 x 365 x 275mm
Master carton weight:	10.8kg
Pallet quantity:	72 (18 master cartons)
Pallet dims (HxWxD)	1150 x 1150 x 1035mm
Pallet weight:	204.8kg
Country of origin:	India
Country of configuration:	UK

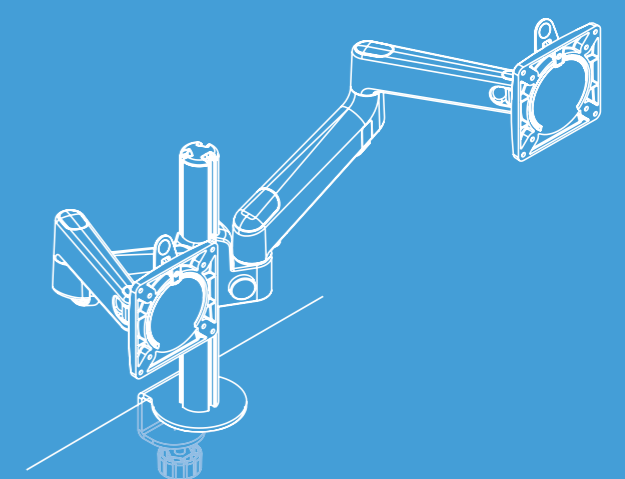
Note: Some logistical data is estimated and subject to future confirmation.*

CONFIGURATIONS



LIMA SINGLE

1 x LMA/001/001



LIMA DUAL

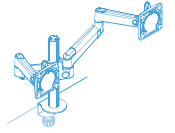
1 x LMA/001/001

1 x LMA/001/002

lima

Lima Arm only
LMA/001/002

LMA/001/002 is used only to
upgrade LMA/001/001 into a
dual screen solution



bhc furniture
plan - manage - install

KEY FEATURES

- Additional arm for dual screen applications
- Supports up to 6.5kg in monitor weight
- Articulation range and smoothness of motion
- Height adjustability achieved using push button technology
- Tool less installation (with the exception of fixing VESA plate to monitor)
- Material selection and 'design-for-disassembly' make Lima 100% recyclable at the end of its operational life.
- Available in Black, White and Grey

See configuration sheet 'Lima Dual Screen' for full range of dimensional specification measurements in dual screen use or LMA/001/001 for single screen use

Maximum Load Range:	6.5kg (14lbs)
Maximum Reach:	456mm
Vertical Range:	210mm
Tilt Range:	+80° / -10°
Recycled content:	15.9%
Total product recyclable:	100%

ORDERING INFORMATION

Product Description: Lima Arm
 Product code: LMA/001/002
 Colour: /G: Grey or /W: White or /B: Black

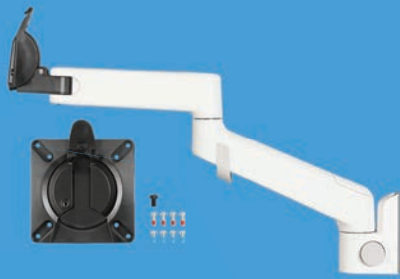
WARRANTY

Warranty Term: Limited lifetime

LOGISTICAL

BOX CONTAINS

Lima arm, VESA mount plate & VESA fixing screws

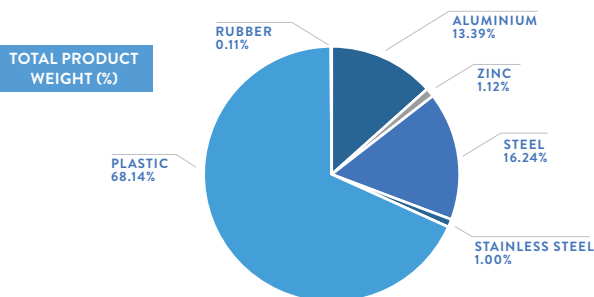


Product net weight: 0.9kg
 Box dims (HxWxD): 535mm x 172mm x 70mm*
 Box gross weight: 1.3kg
 Master carton quantity: 6
 Master carton dims (HxWxD): 560 x 365 x 235mm
 Master carton weight: 8.6kg
 Country of origin: India
 Country of configuration: UK

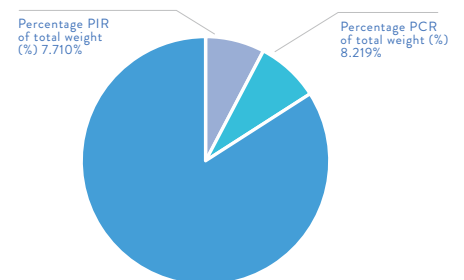
Note: Some logistical data is estimated and subject to future confirmation.*

ENVIRONMENTAL

MATERIAL MAKE-UP			TOTAL RECYCLED CONTENT	BREAKDOWN OF RECYCLED CONTENT		TOTAL RECYCLABLE	
Overall Product			Overall Product	Overall Product		Overall Product	
Material type	Total Material type weight (g)	Percentage of Total Product Weight (%)	Material-Type Recycled Content (%)	Percentage PIR of total weight (%)	Percentage PCR of total weight (%)	Total Product Recyclable (g)	Total Product Recyclable (%)
Aluminium	120	13.39%	12.72%	6.74%	5.98%	120	13.39%
Zinc	10	1.12%	0.49%	0.25%	0.25%	10	1.12%
Steel	145.5	16.24%	2.11%	0.36%	1.75%	145.5	16.24%
Stainless Steel	9	1.00%	0.60%	0.36%	0.24%	9	1.00%
Plastic	610.5	68.14%	0%	0%	0%	610.5	68.14%
Rubber	1	0.11%	0%	0%	0%	1	0.11%
Total	896	100%	15.929%	7.710%	8.219%	896	100%



TOTAL PRODUCT RECYCLED CONTENT (%)



COMPLIANCE & SAFETY CERTIFICATION

Whilst no mandatory standards apply to the monitor arm product sector, all Colebrook Bosson Saunders monitor arms have been designed with appropriate articulation features, dimensional range and adjustability to conform to the requirements of BS EN ISO 9241:5 1999 Ergonomic requirements for office work with visual display terminals (VDTs).

While every effort is made to ensure the accuracy of our technical information, Colebrook Bosson Saunders (Products) Ltd accept no liability for the accuracy of the information contained in this document and reserve the right to modify the specifications or data contained herein without prior notification.

Doc Rev 1. Product Rev #A / 04.04.2019 CF

CLEANING, STORAGE & MAINTENANCE

Routine servicing
 Service components
 Cleaning & Maintenance
 Handling & Storage

Periodic inspection
 Available to order
 Damp cloth, no abrasives, no solvents to be used on the cosmetic surfaces
 Do not drop or expose to moisture

bhc furniture
 plan - manage - install