

Clara

Clara is a stylish mid lounge chair designed to provide comfort and style for contemporary cafe, corporate and breakout areas. Clara offers a choice of frame to suit any budget or environment.

The two-tone fabric option creates an alternative contemporary finish, complemented by a range of base options.



Standard Features

(*Selected models only)

- Moulded foam construction
- Fully upholstered
- Tubular Steel 4 leg frame*
- Tubular Steel 4 leg frame with 50mm hard wheel castors*
- 4 Star base with swivel centre column with felt glides*
- Pyramid base with felt glides*
- 5 Star base with gas unit*
- Solid Beech 4 leg frame*
- Solid Ash pyramid base*

Optional Features

- Castors for hard and soft floor*
- Brake loaded and unloaded castors*
- Auto return stem*
- Two-tone upholstery
- Felt glides*
- Choice of finish options available
- see finish page

Options

Clara is a moulded foam construction which can be upholstered in two-tone fabric. The chairs can be specified on a range of Polished Chrome or wood frames all with distinct characteristics.



Dimensions

OH-Overall Height OD-Overall Depth OW-Overall Width AH-Arm Height BH-Back Height SH-Seat Height SW-Seat Width SD-Seat Depth



Finish Options

- Frame available in Black powder coat or Polished Chrome*
- Base finishes available in Polished Aluminium*
- Wood finishes available in Oak, Natural or Walnut*
- Clara can be upholstered in a broad range of contract upholstery fabrics, leather and vinyls from The Senator Group standard upholstery collection*

Wood Frame Finishes



Oak

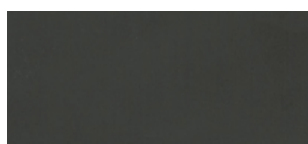


Natural



Walnut

Metal Frame Finishes



Black (Powder Coat)



Polished Chrome

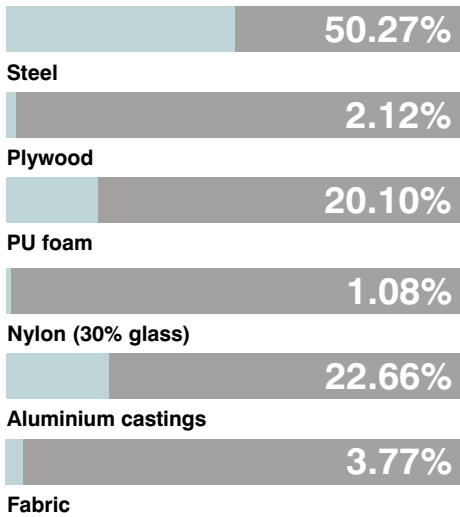


Polished Aluminium

Environmental

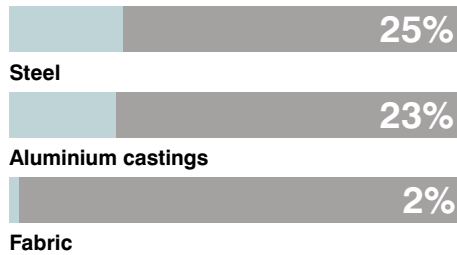
Material Content

Components are constructed of the following



Recycled Content

Contains up to 50% of Recycled Material



Recyclability

The range is 99% recyclable

99%

Environmental information for this range has been based on CLR30. For more detail please refer to individual EPA sheets.

The Senator Group 3 R's

The Senator Group is committed to continually improving the sustainability of all environmental aspects within our business.

To meet both international standards and our own environmental targets we apply the three R's principle

-Reduce, Reuse and Recycle.

Whilst recycling is the element which receives the most exposure it is actually the last option available and should never be the prime target in anyone's battle to reduce waste.

It is our duty as individuals and as a company to initially attempt to **Reduce** usage. Then we should look to **Reuse** wherever possible and finally, only after these two processes have been exhausted, should we consider **Recycling**.

–Reduce
–Reuse
–Recycle